



DLP® and the DLP logo are registered trademarks of Texas Instruments.

Visual Evolution

all the way!



Cinema Class Visual Performance

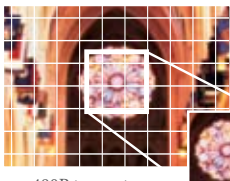
Application

Conference room / boardroom / auditoriums / lecture halls



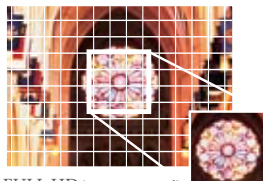
Full HD 1080p

Readability and image quality are extremely important to a great presentation. SP890 offers 1080p definition suitable for displaying Full-HD content without downscaling or compression. Allowing students to engage the lecture in full clarity.



480P (800x480)

**FULL HD
1080P**



FULL HD (1920x1080 pixel)

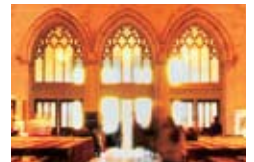


HQV video processor

HQV automatically converts low resolution sources such as 480i, pixel by pixel, to produce flawless rendered, Full HD-like image quality – whether they are analogue or digital. HQV allows teachers to prepare lessons using their existing teaching resources without worrying about the original image quality.



Regular SD to HD (16 pixels)



Seneye SD to HD (1024 pixels)

DMD chip guarantee

With all-digital DLP image processing, BenQ projectors never suffer color decay, ensuring vibrant, bold colors that last.

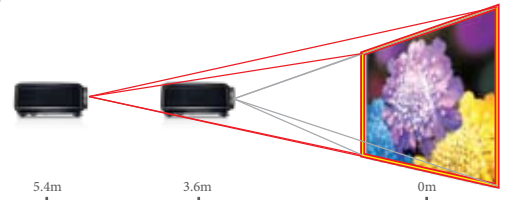


H&V lens shift / 1.5:1 big zoom

Enabling superior installation flexibility in both circumstances of new installation and replacing existing projectors for all your school applications.



H&V lens shift



BenQ Onsite Service

* 3 Years Onsite Pickup/Return Warranty (EDU models)

Customization for Education

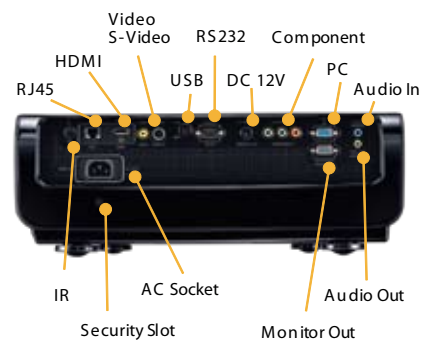
* 5 Years DMD TI Chip Warranty

* 1 Year Lamp Warranty



SP890

Projection System	DLP* technology by Texas Instruments*	
Native Resolution	1080p (1920 x 1080)	
Brightness	4000 ANSI lumens	
Contrast Ratio	5000:1 (Full on/Full off)	
Aspect Ratio	Anamorphic/ 4:3/ Wide/ Letter Box/ Real screen selectable	
Color	Full 1.07 billion color palette	
Lens	F=2.48-2.81, f=24.1-36.1	
Zoom Ratio	Manual Zoom, 1.5:1	
Lens Shift	Vertical: ±125% / Horizontal: ±41%	
Image Size (Diagonal)	28" to 500"	
Throw Ratio	1.62 to 2.43, 55.7"@2M	
Lamp	300W, 2000/3000 hours (Normal/Economic mode)	
Computer Compatibility	VGA(640 x 350) to WUXGA(1920 x 1200)	
HDTV Compatibility	480i, 480p, 576i, 576p, 720p, 1080i, 1080p/60/50/24	
Video Compatibility	NTSC, PAL, SECAM	
Horizontal Frequency	31-92 kHz	
Vertical Scan Rate	48-85 Hz	
Input Terminals	PC	Analog RGB: D-sub 15 pin x 1 HDMI (v1.3) x 1 Component Video: RCA x 3 S-Video: Mini Din 4 pin x 1 Composite Video: RCA x 1
	A/V	
Output Terminals	Audio	Stereo Mini Jack x 1
	PC	D-sub 15 pin x 1
Control Terminal	DC 12V x1	
	Serial Connector : RS232 (D-sub 9pin) x 1	
	LAN Control : RJ45 x 1	
Dimensions(W x H x D)	428 x 156 x 345 mm	
	Weight 7.2 kg (15.9lbs)	
Power Supply	100 to 240 V AC, 50/60 Hz	
Power Consumption	Typical 440W, Standby<1W	
Audible Noise	36/33 dB (Normal/Economic mode)	
On-Screen Display Languages	ENGLISH/ 繁體中文/ FRANÇAIS/ ESPAÑOL/ DEUTSCH/ ITALIANO ☑体中文/ 한국어/ 日本語/ РУССКИЙ/ Nederlands/ Português svenska/ Čeština/ polski/ မြန်မာစာ/ Türkçe	
Picture Modes	Cinema/Dynamic/Presentation/sRGB/User 1/User 2	
Functions	Full HD 1080p Resolution	True pixel-by-pixel processing
	HQV™ Image Processor	Motion-adaptive de-interlacing
	BrilliantColor™	Noise Reduction
	DynamicBlack™	Independent Color Control
	H+V Lens Shift	PIP
	Direct Power On and Off	LAN Control
Accessories (Standard)	Closed Caption	3D Comb Filter
	User Manual CD	Power Cable
	Quick Start Guide	Component Video Cable
Accessories (Optional)	Remote Control	D-sub cable
	Batteries	
	Ceiling Mounting Kit	Spare Lamp Kit



HIGHLIGHTS

- Full HD 1080p
- 50000:1 Contrast Ratio
- 4000 ANSI lumens
- HQV™ Image Processor
- LAN Control